



JonathanWright
estate agents



72 Caswell Road, Leominster, HR6 8BD. £295,000

**72 Caswell Road
Leominster
HR6 8BD**

£295,000

PROPERTY FEATURES

- **An Extended Semi-Detached House**
- **3 Double Bedrooms**
- **En-Suite Shower Room**
- **Lounge**
- **Kitchen/Dining Room**
- **Utility Room**
- **Ground Floor Cloakroom/W.C.**
- **Family Bathroom**
- **Detached Garage And Separate Workshop**
- **Large Gardens**

To view call 01568 616666





An extended semi-detached house offering UPVC double glazed, spacious family living accommodation to include a reception hall, lounge, kitchen/dining room, utility room, ground floor cloakroom/W.C, 3 double bedrooms, en-suite shower room, main family bathroom and outside a Resin paved driveway to front with parking for plenty of vehicles, a large garden to rear ideal for young families and a detached garage with workshop. Caswell Road is well positioned for Leominster's town centre and nearby amenities to include schooling and a train station.

A composite entrance door opens into a reception hall and a door then opens into the lounge. The lounge has a feature fireplace with a gas fire standing on a raised hearth with fire surround over and useable alcoves to either side of the chimney breast. The lounge has laminated flooring and a UPVC double glazed window to front. From the lounge a door opens into a kitchen/dining room.

The spacious and modern kitchen/dining room has a working surface with an inset sink unit with cupboards and drawers under, further working surfaces with base units to include cupboards and drawers and a planned space for a cooker with an extractor hood with light over. There is planned space for a fridge, a range of matching eye-level cupboards, a UPVC double glazed window to the side, ample room for a family size dining table, built-in cupboards and units to either side of the chimney breast and a double glazed siding patio door opening out to the rear garden.

A doorway from the kitchen/dining room leads into the utility room having a working surface with space under for a washing machine and tumble dryer. There is also room for a fridge/freezer, eye-level cupboards, a UPVC double glazed window to side, a door into a useful storage cupboard with fitted shelving and a door to the rear garden. A door from the utility room leads into a ground floor cloak room/W.C, having a low flush W.C, wall mounted wash hand basin, extractor fan and a frosted UPVC double glazed window to rear.

From the reception hall a staircase rises up to the first floor landing having a double glazed window to side, inspection hatch to the loft space above and doors off to bedrooms..

Bedroom one is a good size master bedroom having UPVC double glazed windows to side and rear and built-in bedroom furniture to include wardrobe units,

box storage and bedside tables.

A door from the bedroom opens into an en-suite shower room, having a shower cubicle with an electric shower over, wash hand basin, vanity unit under, a low flush W.C and towel rail.

Bedroom two is also a good size double bedroom having ample room for bedroom furniture and a UPVC double glazed window overlooking the rear garden. Bedroom three is also a generous bedroom with room for a double bed and also a UPVC double glazed window to the front.

From the landing a door opens into the main family bathroom having a 4 piece suite to include a shower cubicle with an electric shower over, a side panelled bath, low flush W.C. and a pedestal wash hand basin. The bathroom has a UPVC double glazed window to side and doors into an airing cupboard.

OUTSIDE.

The property is situated in a mature and well established, residential position and is accessed to the front over a pedestrian pathway and onto a Resin paved, splayed driveway with parking for plenty of vehicles. The driveway continues to the side of the property leading to a detached garage.

GARAGE.

The good size garage has lighting, power and a door giving access to the rear garden.

Off the driveway there is secure gated access to the rear garden.

REAR GARDEN.

A feature of the property is the large and attractive rear garden, which has been thoughtfully laid out to include a good size patio, ideal for entertaining and also has a large veranda providing a sheltered seating area. The remainder of the garden is laid to lawn and has a second patio seating area with a useful storage shed. A gate gives access to a further vegetable garden area at the rear with a further storage shed and greenhouse.

Off the garden and to the rear of the garage a door gives access into a useful workshop.

WORKSHOP.

The workshop has power, lighting and could be insulated to make a home office/studio.

SERVICES.

All mains services are connected, electric heating and telephone subject to BT regulations.

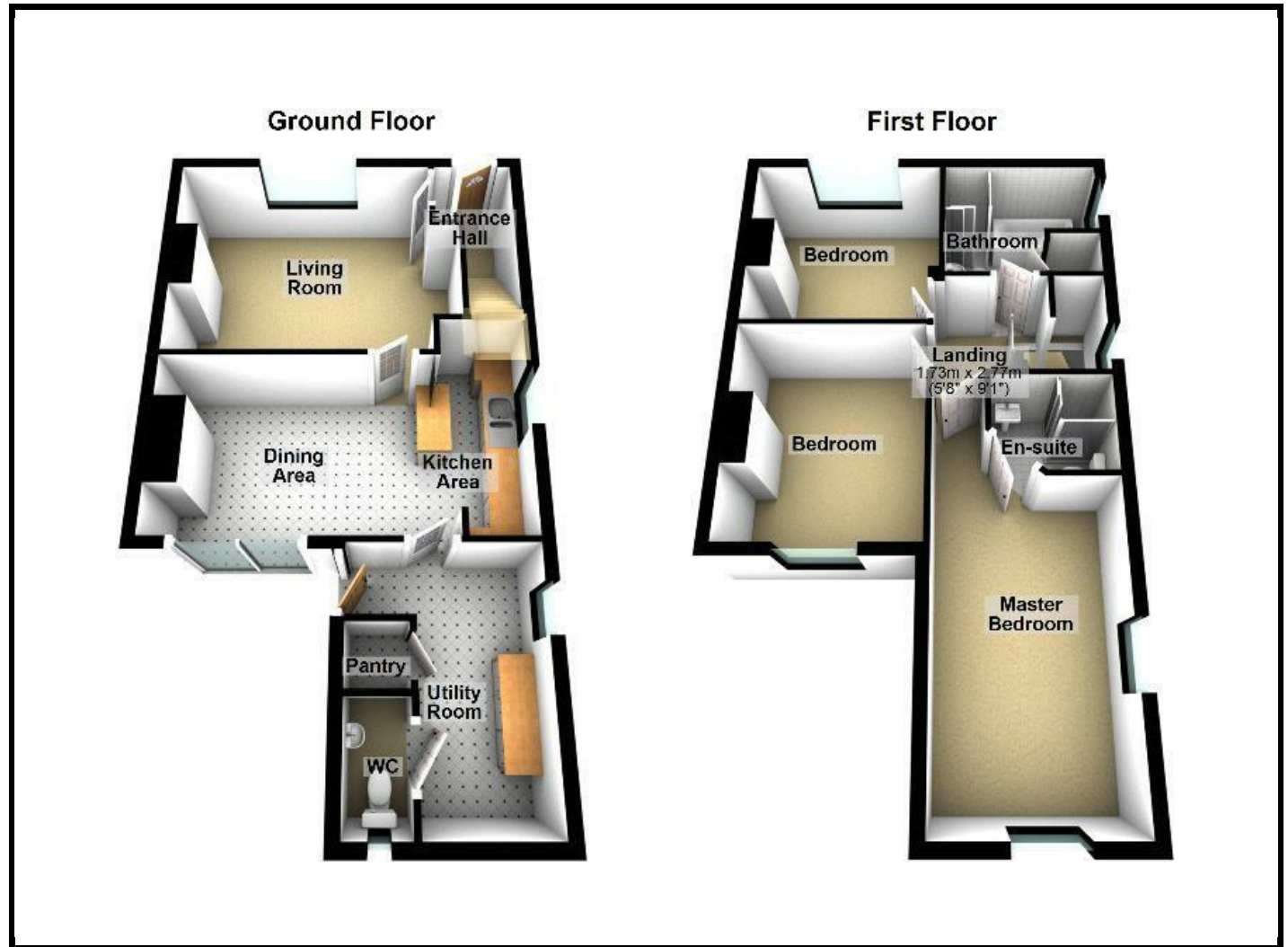
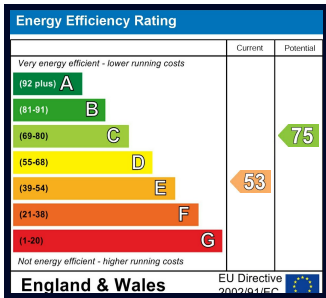


ROOMS AND SIZES

Reception Hall	
Lounge	4.72m x 3.66m (15'6" x 12')
Kitchen/Dining Room	5.64m x 2.92m (18'6" x 9'7")
Utility Room	3.76m x 1.70m (12'4" x 5'7")
Ground Floor Cloakroom/W.C.	
Bedroom One	5.61m x 2.84m (18'5" x 9'4")
Bedroom Two	3.56m x 2.90m (11'8" x 9'6")
Bedroom Three	3.05m x 2.92m (10' x 9'7")
Bathroom	
Garage	5.54m x 2.74m (18'2" x 9')
Rear Garden	
Workshop	2.67m x 2.51m (8'9" x 8'3")

PROPERTY INFORMATION

Council Tax Band - B
Property Tenure - Freehold



Appliances

Please note that the agents have not tested the appliances to the property and cannot verify they are in working order.

Jonathan Wright Estate Agents for themselves and the seller of this property, whose agents they are, give notice that these particulars do not constitute any part of an offer or contract, that all statements contained in these particulars relating to this property are made without responsibility and are not to be relied upon as a statement or representation of fact and that they do not make or give any representation or warranty whatsoever in relation to this property.

Any intending buyers must satisfy themselves by inspecting or otherwise as to the correctness of each of the statements contained in these particulars. These particulars are issued solely on the understanding that all negotiations are conducted throughout this agency.